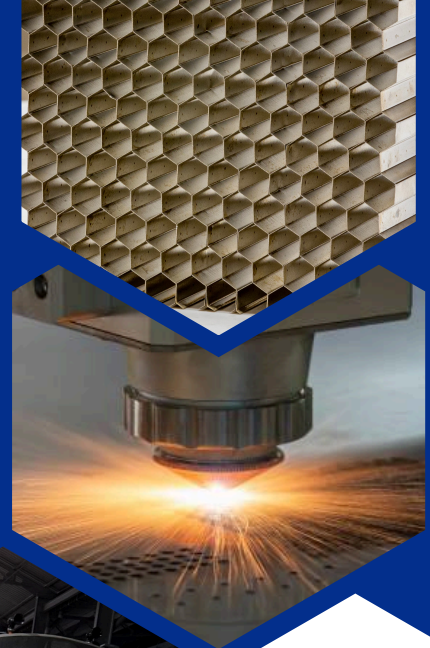
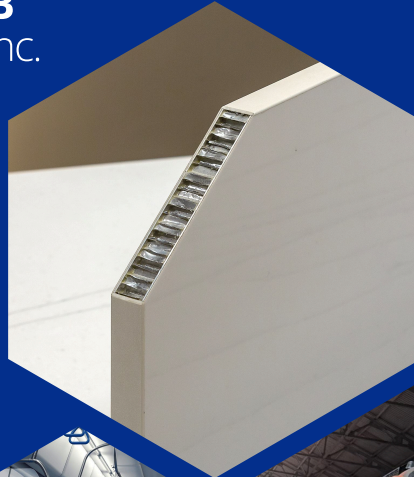




**HONEYCOMB**  
International Inc.



# LIGHTWEIGHT. STRONG. REVOLUTIONARY.

Engineering tomorrow's railways, metros, and beyond, from India, to the world.



# We don't just manufacture panels. **We engineer trust.**

Every cut, every cell, every panel is crafted to  
redefine strength without weight, making travel  
safer, interiors smarter, and infrastructure more  
sustainable.

Think Light, Think Strong.....Think Honeycomb

A background pattern of light gray hexagons, some of which are slightly offset to create a 3D effect.

# Pioneers of Honeycomb Engineering in India.

Since 2002, we've been at the forefront of lightweight innovation in India — reimagining interiors for railways, metro systems, aerospace, and infrastructure.

We were the first to introduce Honeycomb Sandwich Panels to Indian Railways, proudly driving the Make in India initiative and setting new benchmarks for engineering excellence.

From India's first Vande Bharat Sleeper Coach to aerospace-grade structures, our journey has been built on one principle: precision with purpose.

Think Light, Think Strong.....Think Honeycomb

# Founders & Visionaries



## B M Rakshit

Founder

A former DRDO scientist and design engineer on the Concorde Supersonic Aircraft with British Aircraft Corporation, UK.

He pioneered the introduction of honeycomb sandwich panels to Indian Railways, shaping the future of lightweight, durable, and safe passenger coaches in India.



## Pramod

Managing Director

With extensive experience in engineering operations, strategic partnerships, and product innovation, Pramod continues to build upon Honeycomb's legacy of precision, quality, and Make in India excellence, driving growth across railways, aerospace, and infrastructure projects.

Think Light, Think Strong.....Think Honeycomb





# Mission

Strength, precision and trust in every panel we create.

Lightweight solutions that power heavy industries.

Innovation. Quality. Customers first.

# Vision

To be the global benchmark in honeycomb engineering.

To shape the future of transport.

To build smarter, stronger, sustainable infrastructure.





Honeycomb isn't just material.  
It's a revolution.

# One technology. Endless possibilities.

Lightweight. Durable.  
High-performance.

Transforming railways, metros,  
aerospace, marine, automotive,  
and beyond.

Think Light, Think Strong.....Think Honeycomb

## OUR PRODUCTS

# What we make.

Precision-engineered solutions that are strong, light, and built to last.

### Honeycomb Panels

Strength without the weight.

From aluminium to Nomex, our panels are engineered to be light yet incredibly strong, delivering performance across railways, aerospace, marine, and infrastructure.

Aluminium

Stainless Steel

Polypropylene (PP)

Nomex

### Railway Solutions

Redefining passenger comfort.

Berths, partitions, luggage racks, and more, designed to make every journey lighter, safer, and smarter. Precision-built for Indian Railways and metro systems worldwide.

Sleeper Berths

Snack Tables

Ladders

Luggage Racks & Bins

Partitions

Sidewall & Ceiling Panels

### Metro Pole Bars

Safety you can hold on to.

Precision-engineered grab poles for metro and public transport systems. Built for passenger safety, accessibility, and efficient space management.

Custom Pole Designs for Coaches & Buses

Vertical & Horizontal Poles

Stanchions & Grab Rails

Accessibility Aids (disabled-friendly supports)

### Custom Builds

Engineered for your world.

From aerospace interiors to marine decks and modular infrastructure, our honeycomb solutions are tailored to meet unique design and performance needs.

Aerospace Interiors

Architectural Facades & Acoustic Panels

Marine Decks & Partitions

Automotive & EV Battery Enclosures

Industrial & Defense Applications



## APPLICATIONS

# Where it matters.

Our innovations power industries across the world.

### Rail & Metro

Lightweight panels and furnishings that make journeys safer, smoother, and more efficient.



### Aerospace

High-performance interiors and panels that take flight without extra weight.



### Marine

Corrosion-resistant decks and partitions for fuel-efficient voyages.



Think Light, Think Strong.....Think Honeycomb

# Where Innovation Meets Industry.



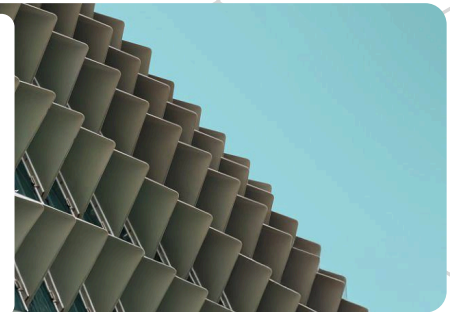
## Automotive & EV

Smarter panels and safer enclosures,  
designed for the next generation of  
mobility.



## Infrastructure

Architectural facades, partitions, and  
acoustic spaces that redefine  
modern living.



## Defence & Industry

Shelters, armoured panels, and  
vibration-dampening structures for  
mission-critical environments.



Think Light, Think Strong....Think Honeycomb



FACILITY

# Where precision meets possibility.

Every detail perfected. Every component certified.



25,000 sq. ft

of state-of-the-art  
engineering.

5,000+

panels every month.

Zero

compromise



TECHNOLOGY

# Every detail perfected. Every component certified.

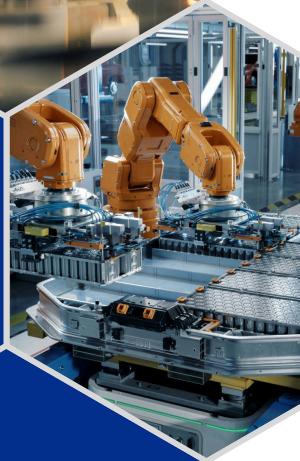
Every detail perfected. Every component certified.



Metal Laser Sheet  
Cutting & Tube  
Cutting

Metal Laser  
Welding & Robotic  
Welding

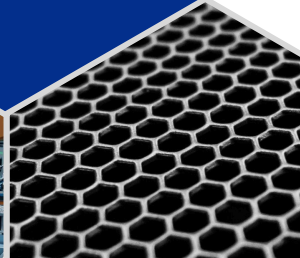
Electro Pneumatic  
Pipe Bending



CNC Router  
Machining

Precision Laser  
Cutting

Advanced Automated  
Assembly Lines





KEY PROJECTS

# India's Pride. Global Impact.

## Vande Bharat Sleeper Coach

India's first sleeper coach, powered by Honeycomb partitions, berths, ladders, and end wall panels.



## ICF-Amrit Bharat furnishing Coaches MCF/RCF

A trusted partner in India's railway expansion, delivering lightweight, durable furnishing solutions.



Think Light, Think Strong.....Think Honeycomb

## Aerospace Components

Nomex and aluminium cores tested and trusted for high-performance interiors.



## Marine & Infrastructure

Corrosion-resistant decks. Durable facades. Modular structures for modern environments.



Think Light, Think Strong.....Think Honeycomb

# Chosen by pioneers.

The world's most demanding clients choose Honeycomb for one reason, uncompromising precision.

## RAILWAY



**KINECO**<sup>®</sup>  
WORLD OF COMPOSITES

**ARVIND**

**TM FAINSA**



## AEROSPACE

**AIR INDIA**



**BLUE DART**  
Aviation Limited

**SAHARA**  
AIRLINES

**SpiceJet**

## DEFENCE-GOVERNMENT OF INDIA



## EXPORTS





**HONEYCOMB**  
International Inc.

Engineering  
tomorrow.

From India, to the world.

[honeycombindia.com](http://honeycombindia.com)

[info@honeycombindia.com](mailto:info@honeycombindia.com)

#No.22,6th Main Road, Sri Gandha Kaval, Sunkadakatte, Bengaluru 560091